

➤ Co2 Glass Laser Marking Machine RNG-ITCO2-30/60-1

▶▶▶ Applicable materials

- Glass bulb light, HID light, ashtray, glass door & window, glass vessel, bamboo ware, wooden ware, leather etc.

▶▶▶ Features

- CO2 glass laser marking machine adopts CO2 laser generator provide stable output and high quality laser mode. Furthermore, low running cost, long-term working and free for maintenance.
- No materials consumed, processing cost is much lower than traditional silkscreen, more clear and rub resistant.
- The platform is movable for easy operation, suitable for marking glass and ceramic products etc.
- The marking software supports files such as CorelDraw, AutoCAD, Photoshop and PLT, PCX, DXF, BMP; SHX or TTF can be directly adopted. Auto-coding for sequence number, batch number, date, barcode and so on.

▶▶▶ Machine display



Moveable Platform

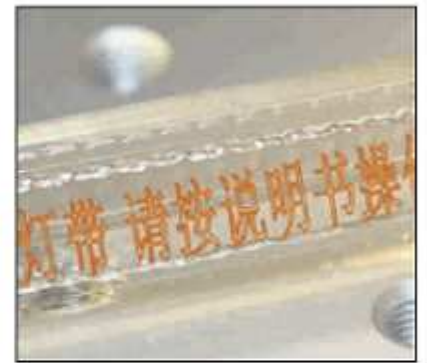


Laser Head



Operation Software

▶▶▶ Sample display



▶▶▶ Technical Index

Model No.	RNG-ITCO2-30-1	RNG-ITCO2-60-1
Laser Power	30W	60W
Min. Line Width	0.6mm	0.6mm
Marking Speed	800-2,000mm/s	800-3,000mm/s
Pulse Repetition Rate	0-50KHz	0-50KHz
Laser Wavelength	10.64μm	10.64μm
Marking Area	70×70mm/110×110mm	70×70mm/110×110mm
Cooling	Air Cooling	Air Cooling
Running Environment	15℃-35℃	15℃-35℃
Power Supply	220V/50Hz	220V/50Hz
Power Consumption	0.8KW	1.5KW
Marking Depth	2mm	3mm